



Scoring and editing activities

Activity 7: Using the Garritan Personal Orchestra Instrument Set

- Adding phrase markings and articulations
- Using TempoTap
- Shortcuts in editing
- Editing key velocity

Using the Garritan Personal Orchestra Instrument Set

Use the setup wizard to start a new document.

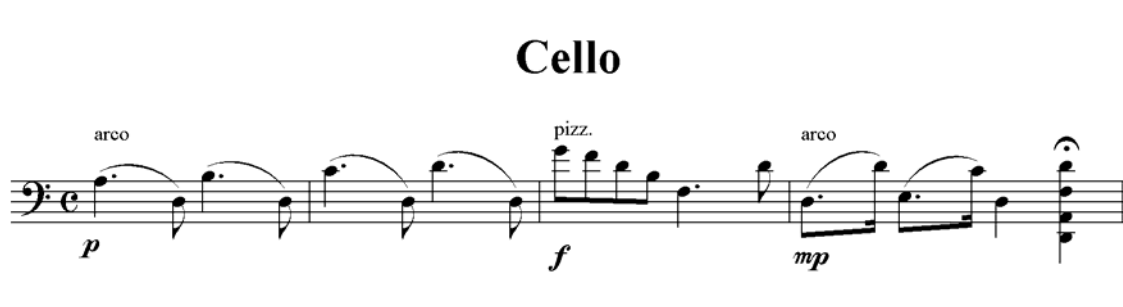
- ⌘ select the Garritan Personal Orchestra Instrument Set
- ⌘ select a solo string or harp instrument or string section which has 'KS' beside it
- ⌘ continue through the setup wizard until the blank score is launched


Compose a short melody and save it.

Select the Smart Shape tool and add phrase markings and articulations to your melody.

Select the Expression tool and add, in this example, pizz and arco bowing, and dynamics.

- ⌘ Hold down the 'o' key on the computer and click over the first note to be played arco.
- ⌘ hold down the 'p' key on the computer and click over the first note to be played pizzicato.
- ⌘ add some dynamic markings. Example using GPO instrument Solo Cello KS:



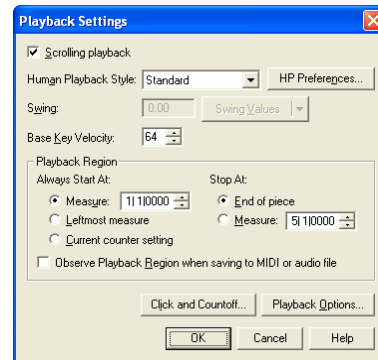
Select the Playback Settings icon  to launch the Playback Settings window. Set the Human Playback Style you require.

Press Play to listen to your melody. All the phrasing, articulation and dynamic markings will occur during playback.

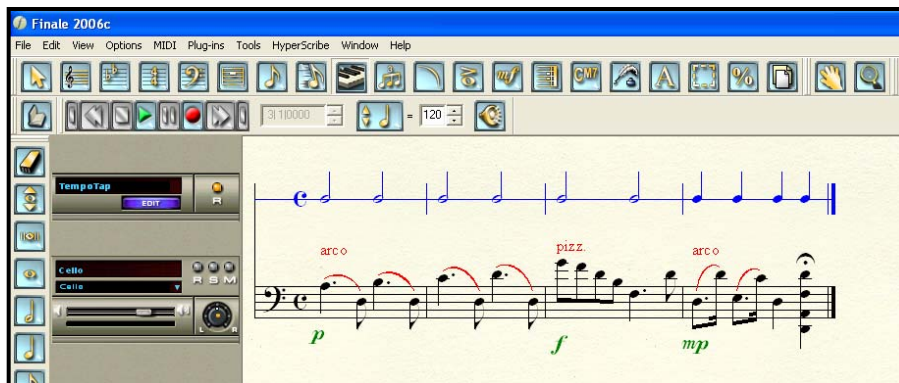
From the View menu choose Studio View.

Use TempoTap to tap, or 'conduct' a tempo adjustment, such as a rubato, using the computer keyboard, or a MIDI device.

- ⌘ Indicate the beats you wish to tap by notating durations into the TempoTap staff with the Simple Entry Tool



- ☞ Click the HyperScribe Tool
- ☞ Click the bar, in the *TempoTap* staff, where you wish to begin specifying the tempo. When you click a bar, a green scroll bar appears which tells you *Finale* is waiting for your signal to start recording a tempo. The first beat you tap is the signal to start recording.
- ☞ Therefore, to prepare for recording a tempo, consider counting off a measure or two, stopping short of pressing the spacebar before recording the first beat.
- ☞ Tap the tempo using the spacebar or a note on your MIDI device. The scroll bar advances at your speed as you tap the tempo. Each tap corresponds to the note duration shown directly above in the *TempoTap* staff.
- ☞ When you are finished, simply stop tapping. Then, click the score. The *Last Recorded Tempo Dialogue Box* displays the tempo you ended with. This tempo is assigned from the point you stopped recording the tempo to the next tempo change.
- ☞ Click OK. Playback the score to review the tempo change.





Shortcuts in editing

To toggle between the three View windows:

- Use Ctrl E to toggle between *Scroll* and *Page* view
- Use Ctrl Shift E to go to *Studio* view.

To program a Chord Metatool

- Click the Chord Tool.
- Press shift and a letter or number key.
- Finale displays the Chord Definition dialog box; create the chord symbol you want to correspond to the letter or number you pressed
- Click OK.

To use a Chord Metatool

- Click the Chord Tool.
- While pressing the letter or number key corresponding to the Metatool you programmed, click a note or rest.
- The chord symbol appears immediately, transposed according to the key signature if necessary.

To program an Articulation Metatool

- Click the Articulation Tool.
- Press shift and a letter or number key.
- Finale displays the Articulation Selection dialog box; double-click the marking you want to correspond to the letter or number you pressed.

To use an Articulation Metatool

- Click the Articulation Tool.
- While pressing the number or letter key to which the desired marking was programmed, click on, above, or below a note or rest.
- If you have notes in both Voice 1 and Voice 2, click above the staff for Voice 1 or below the staff for Voice 2 to place the articulation.
- The marking appears at the place you clicked.
- You can also press a metatool key and drag-enclose the desired notes to apply the articulation to those notes.

To program an Expression Metatool

- Click the Expression Tool.
- Press shift and a letter or number key.
- Finale displays the Expression Selection dialog box; double-click the Expression you want to correspond to the letter or number you pressed.

To use an Expression Metatool

- Click the Expression Tool.
- While pressing the letter or number key corresponding to the Metatool you programmed, click on, above, or below a note or rest.
- If you have notes in both Voice 1 and Voice 2, click above the staff for Voice 1 or below for Voice 2 to place the articulation.
- The expression appears at the place you clicked.

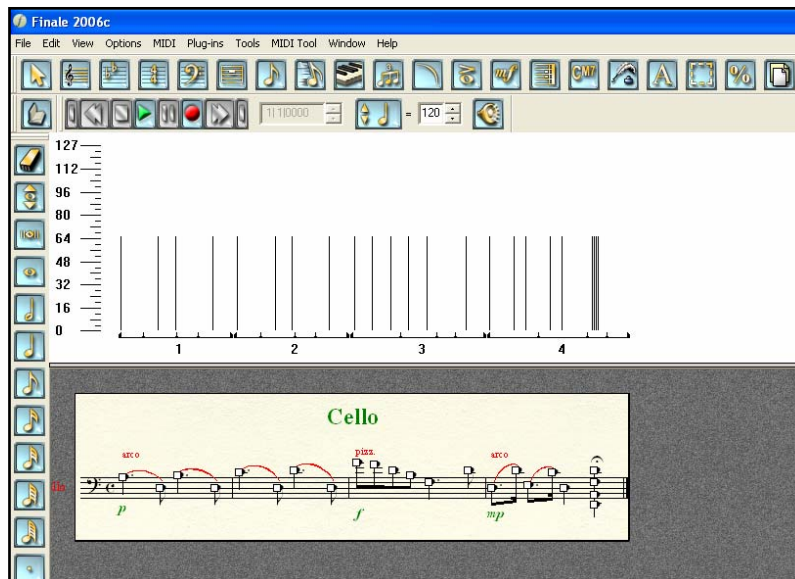
Editing Key Velocity

To edit the key velocity of one or more notes

- from the Window Menu, choose Advanced Tools.



- click the MIDI Tool
- choose *Key Velocities* from the *MIDI Tool Menu*.
- select the region whose playback data you want to affect. Click to select one bar, shift-click to select additional bars, drag-enclose to select several on-screen bars, click to the left of the staff to select the entire staff, or choose *Select All* from the *Edit Menu*. If the selected region is only on one staff, double-click the highlighted area.
- you enter the MIDI Tool split-window.

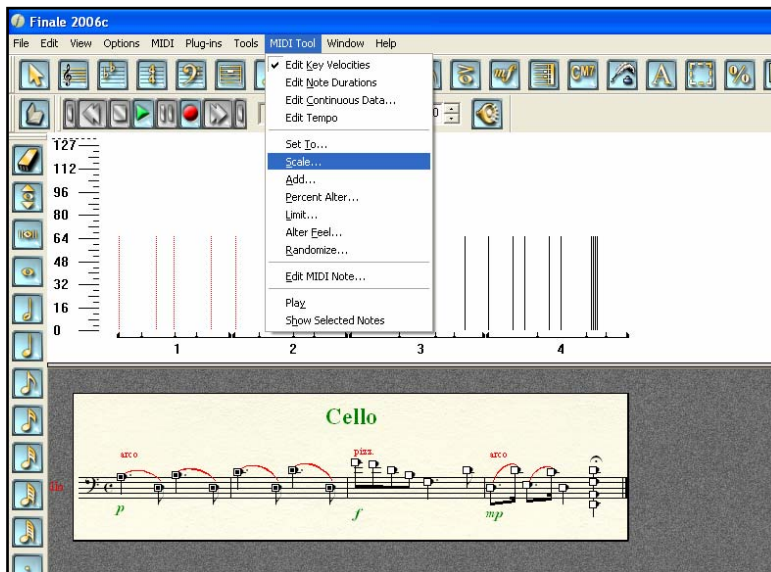


- at the bottom of the window you see the music on the staff you selected.
- above each note is a thin vertical line, creating a bar graph of the key velocities of the displayed notes.
- to select the notes whose velocities you want to edit, drag through the graph area of the window, highlighting it; the handles of all displayed notes are selected.
- you can also click an individual note's handle, or shift-click additional handles, or drag-enclose groups of handles—or even shift–drag-enclose additional groups.

Choose the appropriate command from the MIDI Tool Menu.

- Set To* gives all selected notes a velocity value you specify.
- Scale* creates a smooth gradation from one value to another (ideal for crescendo effects).
- Add* alters every selected note's velocity by a value you specify.
- Percent Alter* alters a note's velocity by a percentage of its current value.

- § *Limit* lets you specify a maximum and minimum velocity value for the selected notes.
- § *Alter Feel* gives you selective control over downbeats, offbeats, and backbeats, (ideal for making the backbeats louder).
- § *Randomize* changes the selected notes' velocities by a random amount, to the degree you specify (ideal for giving a more human "feel" to the piece).



When you're finished, close the MIDI Tool split-window.

- § In order to hear the changes you made, choose Playback Controls from the Window Menu.
- § Click the expand arrow, and then Playback Options.
- § Make sure Play Recorded Key Velocities is selected. If it is, you'll hear the score played back using the performance data—in other words, you'll hear the effects of your velocity editing whenever you play back your score.