

Creating an interactive music worksheet

The following tutorial written by Anne Wisdom provides instructions for creating an interactive worksheet based on the multicultural music unit *Balawan and Batuan Gamelan* located on Curriculum Support website. Steps include downloading the audio file and images and then referring to the track cues in the online listening guide in order to edit the audio file into a series of excerpts. Listening questions based on each of the edited audio excerpts are then devised.

The worksheet is prepared in Word with a title, description, introduction and directions to students. The introduction includes score examples and MIDI files of the rhythm notated using notation software such as Finale 2007 and exported for insertion into the worksheet. Each listening question is accompanied by a link to the corresponding audio excerpt. An image gallery with accompanying descriptions is included, so that students can identify the instruments heard in the audio excerpts.

Requirements

The following software is cross platform.

- Audacity
- Finale 2007
- Microsoft Word
- Microphone

Process – Part 1A

- Create a new folder called **Balawan tutorial**.
- Inside that folder create two new folders and name one **audio** and the other **image**.
- Locate the multicultural unit on *Balawan and Batuan Gamelan* –
 - http://www.curriculumsupport.education.nsw.gov.au/multicultural_music/listening.html
- Download the MP3 file *Running Cak*.

Creating an interactive music worksheet

Create a new folder on the desktop.
Name it **audio**.
Right-click on the link and select **save target as**.
Select the **audio** folder as the destination and click **save**.

- Locate and print the listening guide for *Running Cak*.

0:00 Electric guitar with hi-hat pattern opens
0:08 Section A: Guitar and rindik (xylophone) play a lower descending pattern twice and then a higher descending pattern twice and then repeat. Drum kit and bass accompany.

Example of the listening guide.

- Note the cue for each new section in the listening guide.
- Launch Audacity and open the MP3 file *Running Cak*.
- Use labels to mark where each new time cue occurs in the track and the *Export Multiple* command to save each excerpt as a separate file.

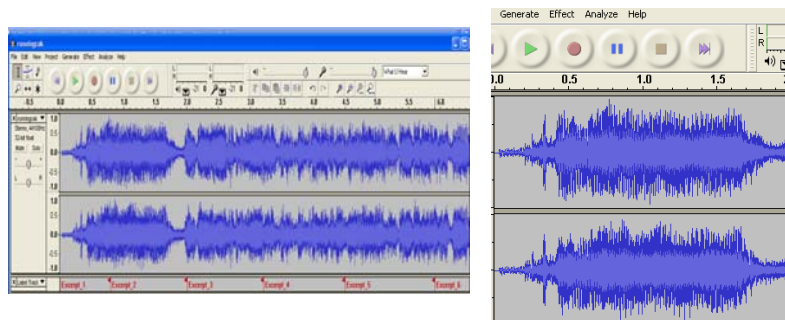
Click to place the cursor at the beginning of the track.

Press **Ctrl+1** repeatedly to zoom in until the time code is displayed in 5 second intervals.

Select the **Add Label at Selection** command from the **Project menu**.

Type the label **Excerpt 1** and press enter.

Add a label at each time cue as per the listening guide.



Creating an interactive music worksheet

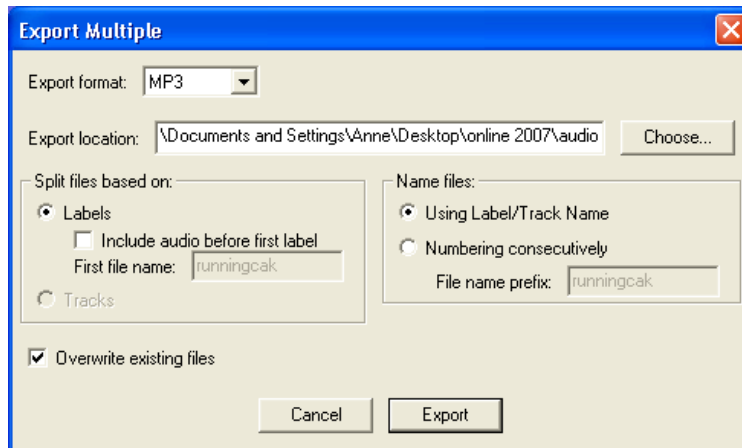
Select [Export Multiple](#) from the File menu to launch the [Export Multiple](#) dialogue box.

Select [mp3](#) as the format and select your [audio](#) folder as the destination.

Select [Split files based on labels](#)

Select [Name files based on labels/Track Name](#)

Click [Export](#).



Process - Part 1B

- Listen to *Running Cak*
- Transcribe the melody of the introduction cue 00:00 – 00:04
- The following directions refer to *Finale 2007*. Adjust the directions as needed to your software in order to create the worksheet.

Launch *Finale 2007* and create a new document using the *Setup Wizard*.

Select the SmartMusic SoftSynth instrument set.

Select [Fretted Instruments > Guitar > Add](#) and then [Next](#).

Choose the time signature and complete the wizard set up.

Enter the rhythm pattern using the [Simple Entry Tool](#).

Creating an interactive music worksheet

- Export as a graphic.

Select [tif](#) as the format and select your [image](#) folder as the destination.

Process - Part 1C

- Launch *Microsoft Word* or an alternate program and set up a Listening Worksheet.
- Add the title of the multicultural unit - *Balawan and Batuan Gamelan*.
- Add the title of the piece of music - *Running Cak*.
- Write a paragraph introducing the genre, the group and the piece of music.
- Insert the tif files of the score examples.

Go to the [Insert](#) menu
Select [Picture > From File](#)
Locate the folder [image](#) containing the tif files
Select [rhythm.tif](#) and click on [Insert](#).

- Create a hyperlink to the MIDI file of the rhythm.

Type the word [Rhythm](#) and then hold the left mouse button and drag over the word to highlight it
Go to the [Insert](#) menu
Select [Hyperlink](#)
Locate the folder [audio](#) containing the MIDI files
Select the file [rhythm.mid](#) and click OK.

Creating an interactive music worksheet

- Devise appropriate questions for each excerpt. Refer to duration, pitch, dynamics and expressive techniques, tone colour, texture and structure.
- Create a hyperlink to the mp3 file of each section of *Running Cak*.
- Download the images of instruments from http://www.curriculumsupport.education.nsw.gov.au/multicultural_music/instruments.html
- Insert the images in the document and add the accompanying descriptions.

Go to the **Insert** menu and select **Picture > From File**

Locate the folder **image** containing the png image files

Select **instruments01.png** and click on **Insert**.

Enter the text underneath the image.



Reong
Row of bronze gong chimes

- Students can refer to these images to answer questions about instruments heard in the audio excerpts.
- Save the worksheet both as a *word document* and as an *html file* in the *Module 1* folder. Name the file **balawan_tutorial**.