

# South Coast from Coalcliff mine to D.H. Lawrence

# 18

## appreciating and making

Colin Lanceley's painting *South Coast from Coalcliff mine to D. H. Lawrence* uses paint and found objects to express his response to the dramatic qualities of the northern Illawarra coast. Many of the found objects or recycled materials look like parts of a strange machine. In this work, the artist is celebrating the unique qualities of a landscape he knows well.

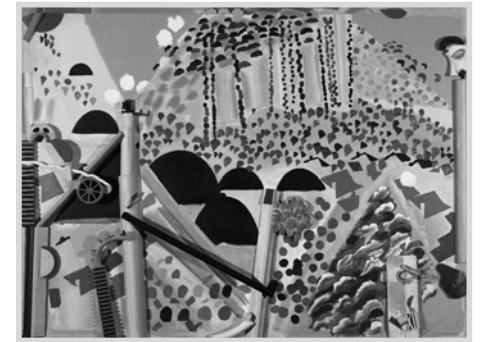
Describe what you see in the painting. Discuss what the images and objects could symbolise or refer to. Can you find D. H. Lawrence in the artwork? Look carefully and observe how some of the forms project out from the surface. Where do you think these objects may have originally come from? What are some of the ways the artist has suggested the feeling of "space", that is, the illusion of things coming forward or receding?

This artwork continues the tradition of assemblage and collage which derive from the early twentieth century art movements of Cubism and Dada. Compare this artwork with an example of a cubist collage by Picasso or Braque, then compare it with Joseph Lycett's landscape, *View upon the Nepean River at the Cow Pastures* (Image #22) and Stephen Bush's painting, *New pontiacs* (Image #3). List the similarities and differences of these landscape depictions.

Imagine you are in the artwork, walking through it from left to right. Explain what you have seen and experienced. Comment on both the built and natural aspects of the landscape. Take another imaginary journey through the central part of the picture, starting at the bottom of the picture and ending at the top. Describe the different types of terrain you are passing through.

Visit several sites in your local area, making drawings and collecting objects that interest you. Use this visual information to make an artwork expressing your own response to your local environment.

Find or take a photograph of a backyard scene. Collect discarded objects and use them to construct an artwork based on this scene. Look at your photograph and simplify the picture into several repeated shapes. Represent these shapes with bright colours in either a collage or a painting.



## details of artwork

Artist	Colin Lanceley
Title	<b><i>South Coast from Coalcliff mine to D. H. Lawrence</i></b>
Date	1987
Media	Oil, wood on canvas
Size (cm)	160 x 215
Collection	Wollongong City Gallery – on loan from private collection Photographer: Robert Bruce

## indicators

### Stage 3

- Understands that artists can represent the world with a variety of media and objects (Making)
- Demonstrates an awareness about the ways the artist has suggested space in the artwork (Appreciating)
- Makes a three-dimensional artwork from found objects (Making)

### Stage 4

- Understands that artworks contain scenes interpreted from different points of view
- Investigates an artwork in an art historical context
- Utilises the particular qualities of found objects to construct an assemblage sculpture

## beyond the frame

In 1922 the famous English novelist D. H. Lawrence visited this part of the South Coast. While living at Thirroul, not far from the Coalcliff mine, Lawrence wrote his book *Kangaroo*. Inspired by the spectacular scenery surrounding the tiny coastal village and the people who lived there, he was able to capture brilliantly in his writing the features and moods of Australian scenery.

beyond the frame